



Department of Communications, Energy and Natural Resources
Roinn Cumarsáide, Fuinnimh agus Acmhainní Nádurtha

Digital Datasets Available from the Exploration & Mining Division

**Dr. Wayne R. Cox, Senior Geologist,
Exploration & Mining Division, DCENR.**



Who Are EMD?

- Line Division of DCENR
- Small Unit (4 Geological Staff)
- Charged with:
 - Regulating the exploration and mining sectors
 - Development of minerals (and geothermal) policy and legislation.
 - Rehabilitation of certain historic mine sites
 - Promoting Ireland internationally as a favourable location to carry out mineral exploration



What Geological Information is Held by EMD & From Where is it Derived?

- Information submitted by exploration companies.
- Publicly available information includes:
 - Thousands of company exploration reports
 - Regional airborne geophysics datasets (>30% of Ireland)
 - Various geospatial datasets (e.g. boreholes, PL Area boundaries, mineral deposits, historic mines, etc.)
 - Administrative data on Prospecting Licence Areas
- All data is FREE and available in digital format.



Ireland's Regulatory System for Mineral Exploration

- Must obtain a Prospecting Licence (PL) from State.
- A PL gives the holder the right to explore for certain minerals in a specified Prospecting Licence Area (approx 35km²).
- PL is initially issued for six years.
- Licensees must submit detailed work reports (“company exploration reports”) every two years.



Exploration Company Reports

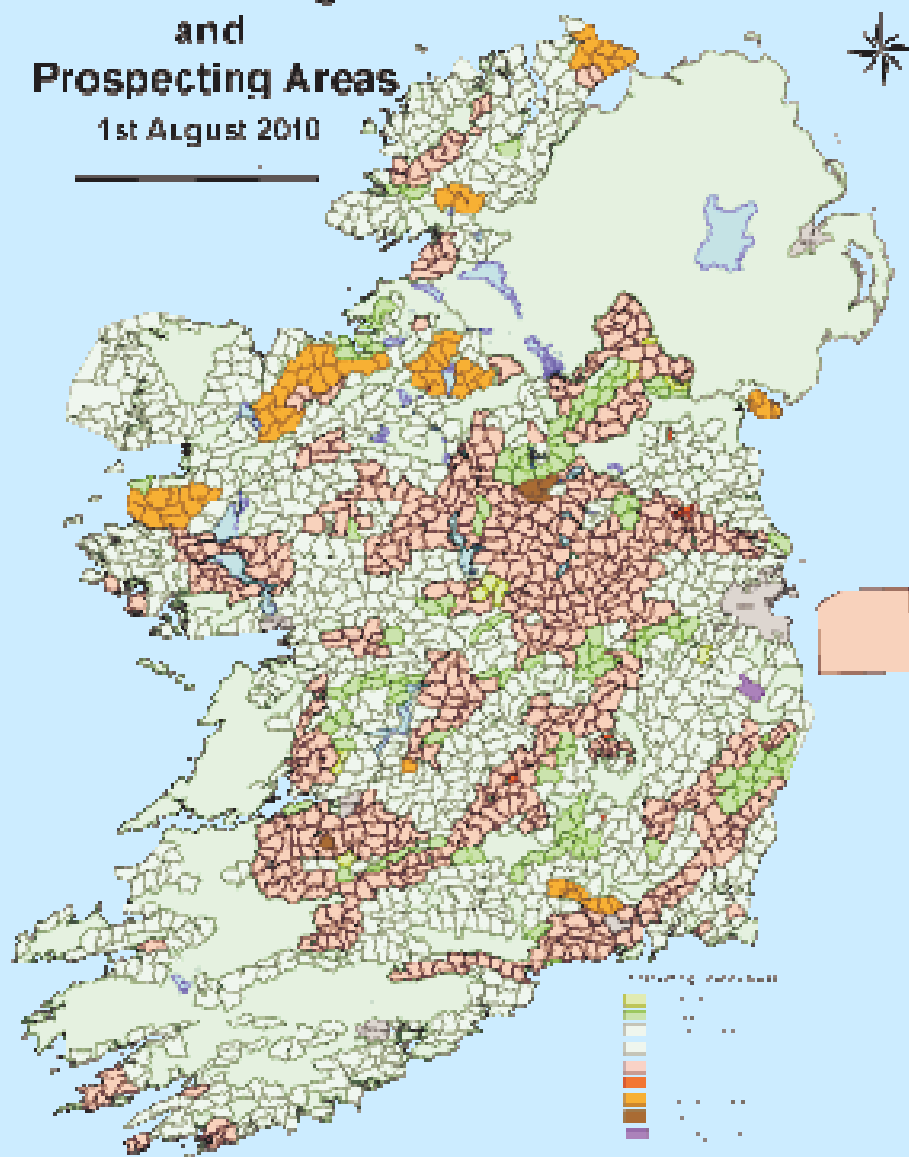
- Work reports must contain details of ALL work carried out by the licensee and ALL results arising from their prospecting activities.
- Must be submitted in appropriate digital format (e.g. PDF, Word)
- A typical work report includes results of geological mapping, geochemical exploration, diamond drilling (logs and assays) & ground geophysics.
- Remain confidential for a period of 6 years or until the licence is surrendered (whatever is sooner).



Department of Communications, Energy and Natural Resources
Roinn Cumarsáide, Fuinnimh agus Acmhainní Nádurtha

State Mining and Prospecting Areas

1st August 2010



Prospecting Licence Area Map of Ireland



P.L. Area Map (Detail)





Demonstration of EMD's Publicly Available Digital Datasets (1)

1. Exploration Company Reports & Administrative Data on P.L. Areas

- 2. Airborne Geophysics Data
- 3. Web Mapping Services

<http://www.dcenr.gov.ie>



Roinn Cumarsáide, Fuinnimh agus Acmhainní Nádurtha
Department of Communications, Energy and Natural Resources

[E-Services](#) | [Customer Service](#) | [Login](#) | [Contact](#) | [Request Braille](#) | [Site Map](#)

All

Search

as gaeilge



Broadcasting

Radio, Television & the provision of quality broadcasting services.



Energy

Security & reliability of energy supply & to develop energy conservation



Communications

Electronic communications, radio spectrum & postal services and regulation.



Natural Resources

Petroleum Affairs, Exploration, Mining, Geology & Inland Fisheries



[Minister Pat Rabbitte](#)



[Minister of State Fergus O'Dowd](#)

Quicklinks

[Minister's Brief 2011](#)

[Croke Park Agreement](#)

[Management Committee](#)

[Spatial Data](#)

[Press Room](#)

[Re-use of Information](#)

[Corporate Units](#)

[Consultation on Statement of Strategy 2011-2014](#)

[Legislation](#)

[Minister's Office](#)

[Minister of State](#)

[Publications](#)

[Corrib Gas Field Development](#)

[Regulation of Offshore Natural Gas Storage](#)

[Exemplar Network](#)

Welcome

The **Department of Communications, Energy and Natural Resources** has responsibility for the Telecommunications, Broadcasting and Energy sectors. It regulates, protects and develops the Natural Resources of Ireland.

Latest News



Minister Rabbitte inspects cable laying works at sea in large energy interconnector project

27/10/2011 11:24:00

Minister Rabbitte visits Malahide Marina to inspect cable laying for Ireland's first electricity interconnector to Great...



Minister Rabbitte welcomes EU Commission Telecoms specialists to Dublin

24/10/2011 12:28:05

Minister Rabbitte welcomes EU Commission Telecoms specialists to Dublin



Learning Waves Conference Address

Aviva Stadium Dublin

Independent Radio: A Strong Voice. Minister Rabbitte also outlines the challenges to the media in Ireland today



EirGrid Group Annual Customer Conference

20/10/2011 09:14:02

EirGrid Group Annual Customer Conference Opening Speech



Minister Rabbitte welcomes EU Commission proposals for the Development of European Energy and Communications Networks

19/10/2011 13:55:27

Minister Rabbitte welcomes EU Commission proposals for the Development of European Energy & Communications Networks

1 2 3 4 5 6 7 8 9 10 ...

[More News](#) »

[RSS](#)

RBS
Rural Broadband Scheme

BETTER ENERGY
The National Energy Programme
Better Energy

<http://www.dcenr.gov.ie/Spatial+Data/>

DCENR Spatial Data - Department of Communications, Energy and Natural Resources - Windows Internet Explorer provided by DCENR

http://www.dcenr.gov.ie/Spatial+Data/

File Edit View Favorites Tools Help

Favorites Free Hotmail

DCENR Spatial Data - Department of Communications,...

E-Services | Home | Login | Contact | Request Braille | Site Map | About Us

Roinn Cumarsáide, Fuinnimh agus Acmhainní Nádurtha
Department of Communications, Energy and Natural Resources


as qaeilqe

BROADCASTING ENERGY COMMUNICATIONS NATURAL RESOURCES

Home > DCENR Spatial Data



DCENR Spatial Data

Petroleum Affairs
Exploration & Mining
Geological Survey of Ireland
Recently Updated Pages
Disclaimer
DCENR Metadata
Terms and Conditions



Welcome to DCENR Spatial Data pages. This is an initiative to present all DCENR spatial data in a usable fashion, to enhance public access to information about the Government and DCENR functions. The business datasets are presented in simple online GIS form via a browser or as a data download. In some cases a more advanced browser is available with additional tools and functionality. For general usage terms see the disclaimer below. WMS and WFS Services are also being made available for selected datasets, please see links and guides below. We welcome suggestions or comments regarding any of the services or datasets presented in this section. Enhanced functionality and content will be added continuously so please bookmark this page and revisit.

Useful Industry Data Links



NOTE: GIS service url's and content have changed as of 09/04/2009. If you have bookmarked any links or sites previously you will need to recreate these. Consumption of WMS or WFS services will also have been effected, again please refresh all links in your applications. Please report any omissions or service failures.

Disclaimer

By using data obtained from these pages you are agreeing to abide by the following [Disclaimer](#) which defines the nature of the data available and the terms of its usage. Please read this text in full.

What's New on DCENR Spatial Pages 2009

GSI and EMD have jointly released access to their Exploration Company Report repositories via a MapViewer



OpenFile PLAREA number Screen

EMD and GSI Exploration Company Reports

The Exploration and Mining Division (EMD) and the Geological Survey of Ireland (GSI) hold Exploration Company Reports (GSI Open File Records) relating to many current and historic Prospecting Licence (PL) Areas. Search for a PL Area below and choose to view a map or a Company Report.

By using the data obtained from these pages you are agreeing to abide by the following [Disclaimer](#) which outlines the copyright and general terms of use of the data. Please read this text in full.

Please enter valid PL Area(s) below. You may enter multiple PL Areas separated by a comma. The 'Map' link when clicked will render the selected PL Area(s) in a GIS (IMF) Viewer. The 'Company Reports' link when clicked will render the selected PL Area(s) Exploration Company Reports page.

PL Area:

[Map](#)

[Company Reports](#)

Enter into the text box, your PL Area number of interest to access relevant company reports and administrative data

Exploration Company Reports Interface: Gateway to EMD or GSI Back-Office Systems

Exploration Company Reports - Windows Internet Explorer provided by DCENR

http://gis.dcenr.gov.ie/imf/sites/ExplorationCompanyReports/explorationCompanyReports.jsp?plAreas=2103




 Department of Communications, Energy and Natural Resources
Roinn Cumarsáide, Fuinnimh agus Acmhainní Nádurtha

Exploration Company Reports

The Exploration and Mining Division (EMD) and the Geological Survey of Ireland (GSI) hold Exploration Company Reports (GSI Open File Records) relating to many current and historic Prospecting Licence Areas. Use the links below to access available, non-confidential documents from their respective systems.



By using data obtained from these pages you are agreeing to abide by the following [Disclaimer](#) which outlines the copyright and general terms of use of the data. Please read this text in full.

PL Area Selected : 2103

PL Area	Document Link to Exploration and Mining Division	Document Link to Geological Survey of Ireland
2103 (Selected)		
1282 (Historic)	No Data Found	

Internet 100%

EMD Back Office: Listing of Accessible Exploration Company Reports for PL Area 2103

<div>  Next 20 1 to 15 of 15  </div>				
Report Title	Report Type	Period, Report Size, Notes	Organisation	Public Availability
Surrender Exploration Report for PL2103 "Teck Cominco Ireland Ltd." for the period 26/03/2007 to 25/03/2009	Exploration Report - Surrender Report		Teck Cominco Ireland Ltd.	Public Document
Renewal Report for PL2103 to cover the 2000-2002 period	Exploration Report - Renewal Report	Exploration From: 2000 To: 2002 FileSize:0.103MB	CSA	Public Document
Renewal Report for PL2103 to cover the 1999-2000 period	Exploration Report - Renewal Report	Exploration From: 1999 To: 2000 FileSize:1.4MB	Rio Algom	Public Document
Renewal Report for PL2103 to cover the two year period 1997-1999	Exploration Report - Renewal Report	Exploration From: 1997 To: 1999 FileSize:1.4MB	CSA	Public Document
Renewal report for PL2103 (County Roscommon) for the period 1995-97	Exploration Report - Renewal Report	Exploration From: 1995 To: 1997 FileSize:2.4MB	CSA	Public Document
Summary block report for the Ballinasloe Block (PL2103, PL2105, PL3459, PL3460 and PL3474) for the period 1995-97	Exploration Report - Renewal Report	Exploration From: 1995 To: 1997 FileSize:2.4MB	CSA	Public Document
Review Of Ballinasloe Block geophysics for PL2091, PL3474, PL3459, PL3460 and PL2103 for the period from December 1994 to February 1995	Exploration Report - Geophysics Report	Exploration From: 1994 To: 1995 FileSize:12.9MB	CSA	Public Document
Renewal report for PL2103, County Roscommon for the one year period ending May 1995	Exploration Report - Renewal Report	Exploration From: 1994 To: 1995 FileSize:2.5MB	CSA	Public Document
Renewal report for Ballinasloe Block Licences PL2103, PL3459 and PL3460 for the period 1993-1994	Exploration Report - Renewal Report	Exploration From: 1993 To: 1994 FileSize: 12MB	CSA	Public Document
Renewal report for Ballinasloe Block Licences PL2103, PL3459 and PL3460 for the period 1992-1993	Exploration Report - Renewal Report	Exploration From: 1992 To: 1993 FileSize:10.6MB	CSA	Public Document
Renewal Report for Ballinasloe Block Licences PL2103, PL3459 and PL3460 for the period 1990-1992	Exploration Report - Renewal Report	Exploration From: 1990 To: 1992 FileSize:6MB	CSA	Public Document
Reef and Supra-Reef Stratigraphy in the Ballinasloe Area, PL2103, PL3459 and PL3460, County Galway (Consultants Report by M Philcox)	Exploration Report - Other Report	Exploration From: 1988 To: 1990 FileSize:1.9MB	Mike Philcox (Consultant)	Public Document
Renewal Report on PL1046R County Roscommon for year ending 25th June 1985, (and PL2103, PL2104, PL2105, Co Roscommon for the year ending 2nd December 1985)	Exploration Report - Renewal Report	Exploration From: 1984 To: 1985 FileSize:7.1MB	Westland	Public Document
Renewal Report on PL1046R County Roscommon for year ending 25-6-84, (and PL2103, PL2104, PL2105, Co Roscommon for the two year period ending 2-12-1984)	Exploration Report - Renewal Report	Exploration From: 1983 To: 1984 FileSize: 24MB	Westland	Public Document
Renewal Report on PL1046R, County Roscommon for the year ending 25-6-1982 (and for PL2103, PL2104, PL2105 County	Exploration Report - Renewal Report	Exploration From: 1980 To: 1981 FileSize:6.6MB	Irish Base Metals	Public Document

Administrative Data on PL Areas: Past & Present Licensees

http://gis.dcenr.gov.ie/internetPLArea/servlet/internet/DCMNRInternetMAPSPLAreaLicencesHideTown - Windows Internet Explorer pro

http://gis.dcenr.gov.ie/internetPLArea/servlet/internet/DCMNRInternetMAPSPLAreaLicencesHideTownlands

PL Area Search **Licences** History Documents Constraints

▼ **Prospecting Licence Area Number: 2103**

County: Roscommon	Barony:
Area (sq. km): 41.68	Issue Date:
Expiry Date:	Exploration Data: 32 Document(s)
Geological Setting: Lower and Middle Carboniferous, Waulsortian "Reef"	Status: Held for certain minerals
Townlands: Show	Map: Map

Licences

Below is the list of current Prospecting Licences associated with the selected PL Area.

< Next 20 1 to 5 of 5 Next >				
Licence	Customer	Minerals	Licence Start Date	Licence End Date
255100843	IMC Exploration Limited	▶ Base Metals	18-05-2011	17-05-2017
133780086	Teck Ireland Limited	▶ Base Metals	26-03-2007	20-04-2009
2832836	Ivernia West Plc.		03-05-1988	09-05-2003
2832814	Irish Base Metals Ltd.		03-12-1980	21-08-1986
2832790	Vestor Explorations Ltd.		16-05-1973	22-06-1979

[PL Area Search](#) | [Licences](#) | [History](#) | [Documents](#) | [Constraints](#) |

Copyright © 2010 by Department of Communications, Energy and Natural Resources. All rights reserved.
[About Internet MAPS Release Unknown](#)

Administrative Data on PL Areas: Environmental Constraints

http://gis.dcenr.gov.ie/internetPLArea/servlet/internet/DCMNRInternetMAPSPLAreaLicencesHideTown - Windows Internet Explorer pro

http://gis.dcenr.gov.ie/internetPLArea/servlet/internet/DCMNRInternetMAPSPLAreaLicencesHideTownlands

PL Area Search Licences History Documents **Constraints**

Prospecting Licence Area Number: 2103

County: **Roscommon** Barony:

Area (sq. km): **41.68** Issue Date:

Expiry Date:

Geological Setting: **Lower and Middle Carboniferous, Waulsortian "Reef"** Exploration Data: **32 Document(s)**

Townlands: [Show](#) Status: **Held for certain minerals**

Map: [Map](#)

Constraints

The list below contains any Environmental Constraints which may affect prospecting activities in this PL Area. All constraints should be referred to responsible Agency. You can view the environmental constraints by clicking on the 'View Environmental Constraints' button below.

[View Environmental Constraints](#) < Next 20 1 to 20 of 40 Next >

Name	Theme
000222 - Suck River Callows NHA	National Heritage Area
Pipeline Under Construction	Utility Line
000222 - Suck River Callows NHA	National Heritage Area
RO06188	Historic Monument Location
RO06644	Historic Monument Location
RO05884	Historic Monument Location
RO05876	Historic Monument Location
RO05878	Historic Monument Location
RO05880	Historic Monument Location
RO05862	Historic Monument Location
RO05867	Historic Monument Location
RO06762	Historic Monument Location
RO05854	Historic Monument Location
RO05858	Historic Monument Location
RO05861	Historic Monument Location
RO05857	Historic Monument Location
RO05834	Historic Monument Location
RO05837	Historic Monument Location
RO05838	Historic Monument Location



Demonstration of EMD's Publicly Available Digital Datasets (2)

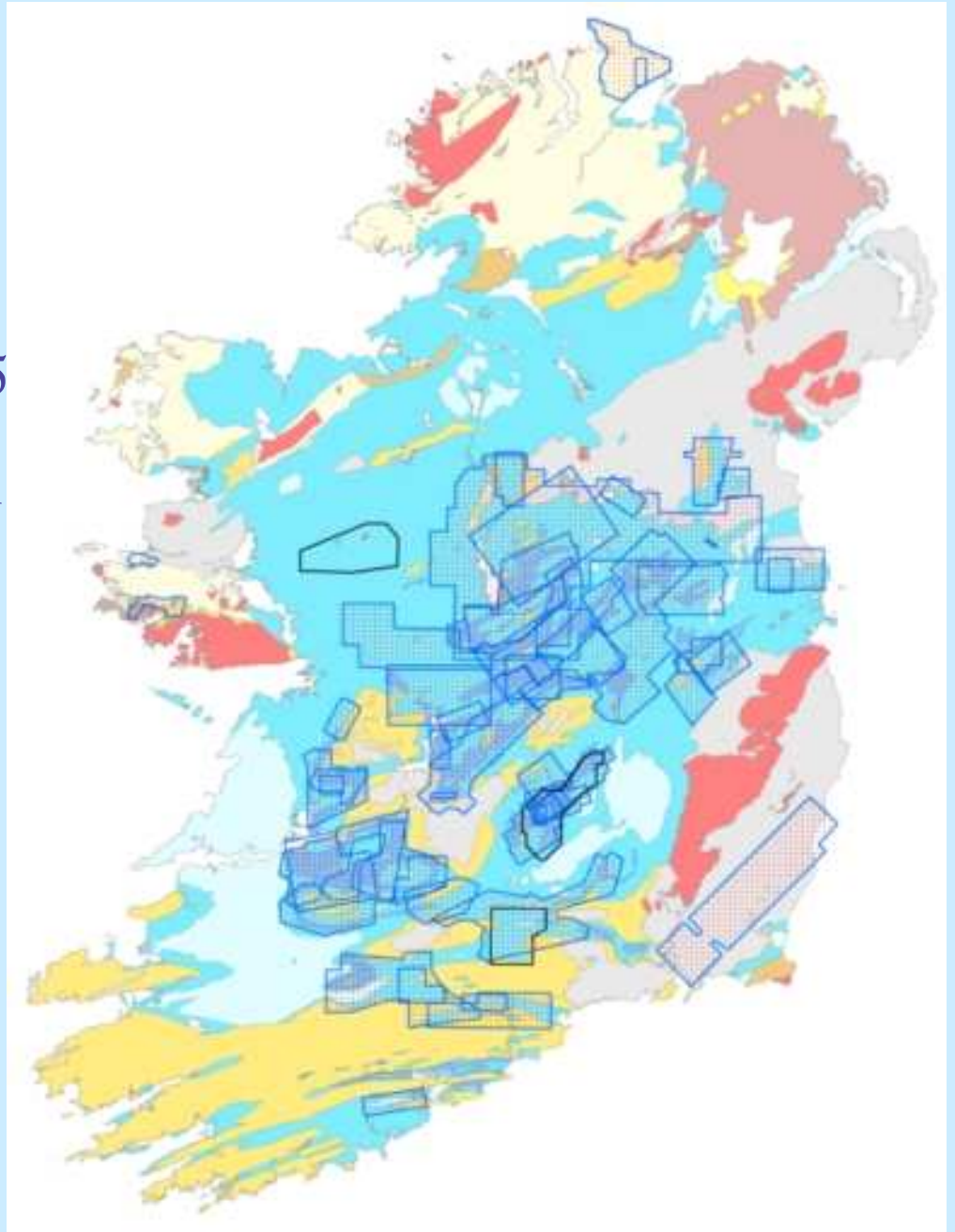
1. Exploration Company Reports & Administrative Data on P.L. Areas

2. Airborne Geophysics Data

3. Web Mapping Services

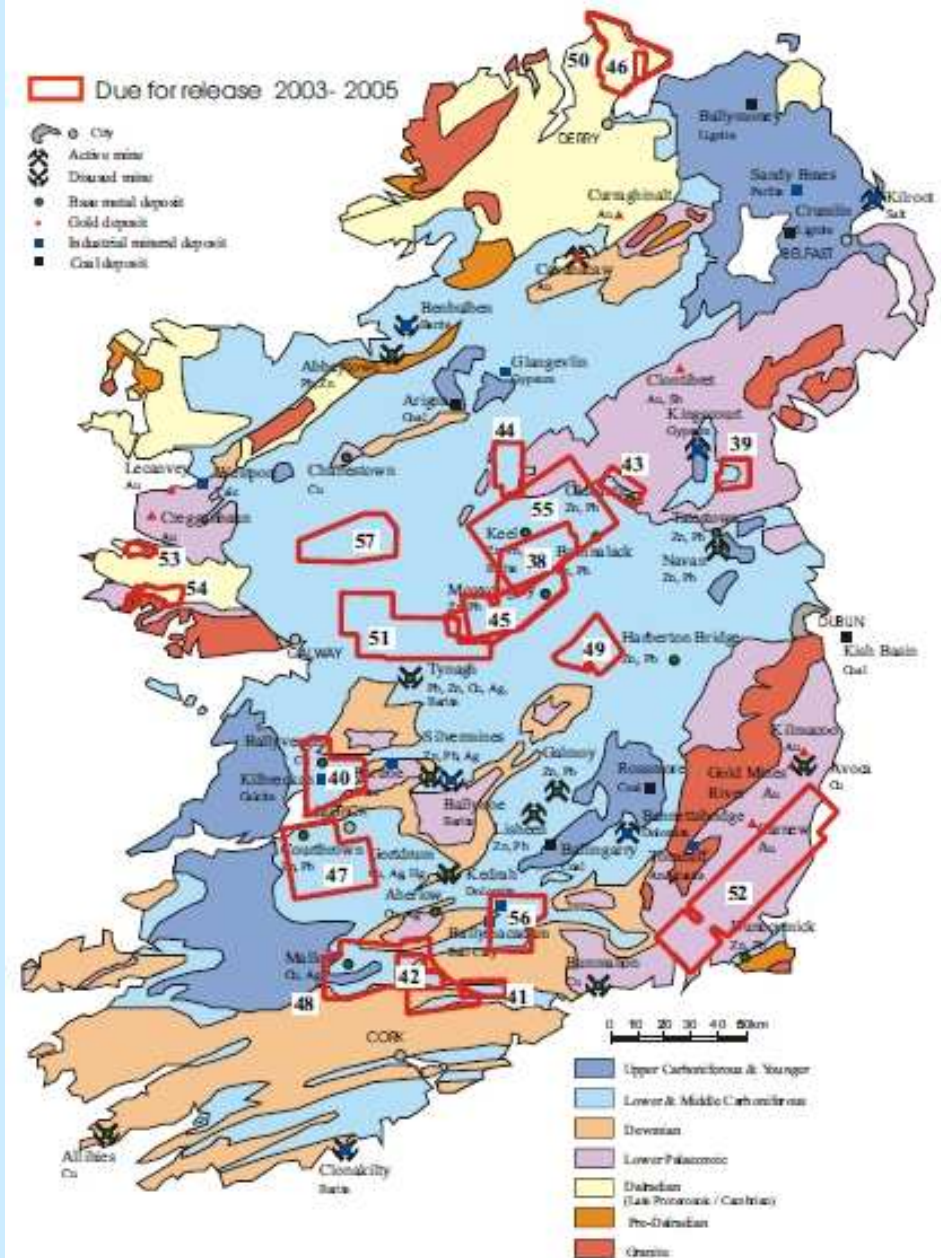
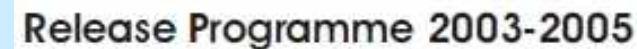
Available Airborne Geophysics Data (1)

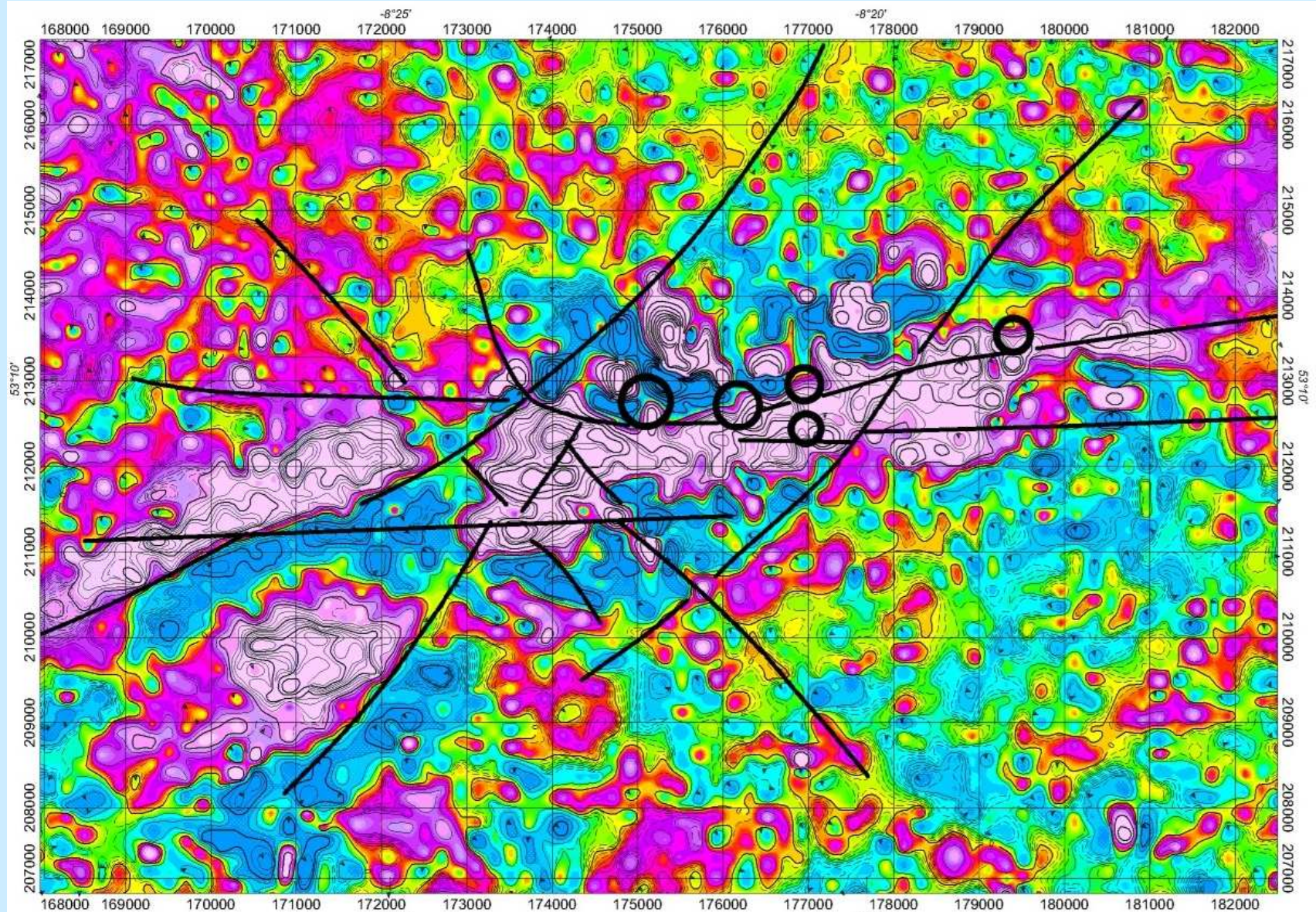
- Approx. 40 surveys since 1985
- Majority of surveys overflown Lower Carboniferous
- Most common surveys are magnetics and EM
- Must lodge all raw, processed and interpreted data with EMD



Available Airborne Geophysics Data (2)

- Data normally submitted in ASCII and Geosoft .gdb & .grd formats
- Held confidential for 4 years after lodgement date
- Datasets very large. Currently only available on CD.





Enhanced magnetics image with structural lineaments at Tynagh

(Image courtesy of PGW Europe Ltd. and Navan Resources Plc)



Demonstration of EMD's Publicly Available Digital Datasets (3)

1. Exploration Company Reports & Administrative Data on P.L. Areas
2. Airborne Geophysics Data
- 3. Web Mapping Services***



Access to EMD Web Mapping Services

- **Can be accessed via the spatial data pages of the DCENR website at**

<http://www.dcenr.gov.ie/Spatial+Data/Exploration+and+Mining>

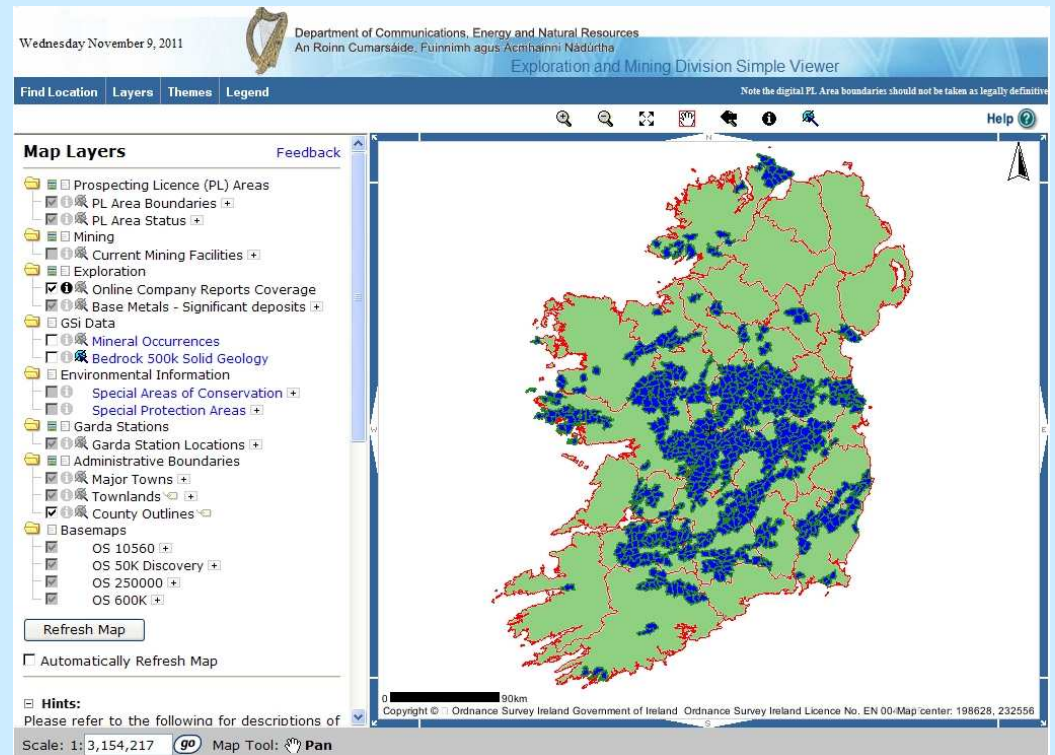
- **Also accessible from the [mineralsireland.ie](http://www.mineralsireland.ie) website at**

<http://www.mineralsireland.ie/Online+Services>



EMD Map Viewers

- Number of different map viewers for visualizing EMD geospatial data.
- ‘Simple’ viewer developed for novice GIS users
 - Simple, intuitive interface
 - Very limited tool set
 - Provides access to limited number of basic datasets
 - Alternative map-based gateway to company exploration reports.



EMD Advanced Viewers

- **Developed for more experienced GIS users**
- **Considerably richer in terms of GIS functionality**
 - More advanced tools (e.g. select, extract, annotation, measure & print tools)
- **Three different ‘Advanced’ viewers**
 - **Exploration** Viewer provides access to:
 - Borehole data including logs
 - Mineral deposit occurrences
 - Geology maps
 - Airborne geophysics survey areas
 - **Mining** Viewer provides access to:
 - Current and expired State Mining Facilities
 - Historic mines
 - Shafts and adits
 - **Environmental Constraints** Viewer provides access to:
 - National Parks
 - NPWS Data (SAC, SPA and NHAs)
 - Forestry areas
 - National/Historic Monuments
- **Advanced viewers currently offline..... Grrrr!**

Data Downloads & Web Mapping Services

- Shapefiles of selected EMD data sets are available for download as Winzip files.
- WMS and WFS feeds also available.
 - Allows users to access EMD geospatial data directly through their own desktop GIS.

About EMD Downloads

The following downloads are provided free of charge. All data contained on this page is Copyright DCENR and Government of Ireland. It may not be used for commercial purposes without prior written consent. Please click here for [Data Usage Statement](#).

The files are stored as Winzip files in shapefile format. All files are projected to Irish National Grid. Area Boundaries in any of these files are approximate and are not legally accurate. For more information please contact EMD at EMD.info@dcmnr.gov.ie

Available downloads

 <p>Filename: PLmap_Feb2011.zip Filesize: 42Mb</p> <p>DOWNLOAD</p>	 <p>Filename: EMDgeophysics.zip Filesize: 18Kb</p> <p>DOWNLOAD</p>	 <p>Filename: historic_mines.zip Filesize: 87Kb</p> <p>DOWNLOAD</p>
---	--	--

The Simple Web Viewer

Wednesday November 9, 2011

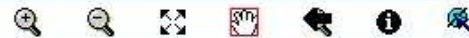


Department of Communications, Energy and Natural Resources
An Roinn Cumarsáide, Fuinnimh agus Ácmhainní Nádurtha

Exploration and Mining Division Simple Viewer

Find Location Layers Themes Legend

Note the digital PL Area boundaries should not be taken as legally definitive



Help ?

Map Layers

Feedback

- ☐ Prospecting Licence (PL) Areas
 - ☒ PL Area Boundaries +
 - ☒ PL Area Status +
- ☐ Mining
 - ☐ Current Mining Facilities +
- ☐ Exploration
 - ☒ Online Company Reports Coverage
 - ☒ Base Metals - Significant deposits +
- ☐ GSI Data
 - ☐ Mineral Occurrences
 - ☐ Bedrock 500k Solid Geology
- ☐ Environmental Information
 - ☐ Special Areas of Conservation +
 - ☐ Special Protection Areas +
- ☐ Garda Stations
 - ☒ Garda Station Locations +
- ☐ Administrative Boundaries
 - ☒ Major Towns +
 - ☒ Townlands +
 - ☒ County Outlines +
- ☐ Basemaps
 - ☒ OS 10560 +
 - ☒ OS 50K Discovery +
 - ☒ OS 250000 +
 - ☒ OS 600K +

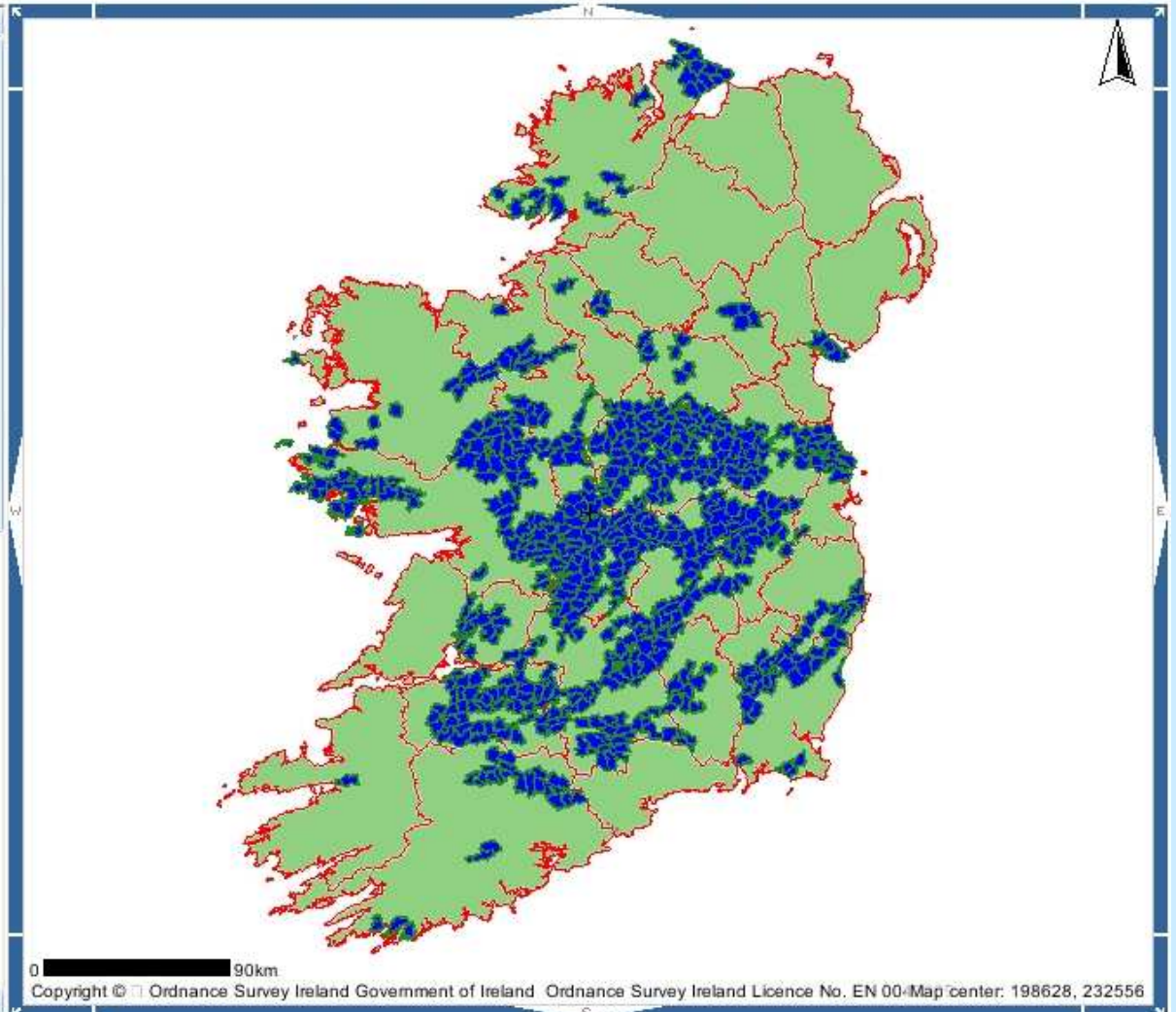
Refresh Map

☐ Automatically Refresh Map

Hints:

Please refer to the following for descriptions of

Scale: 1: 3,154,217 Map Tool: Pan



0 90km

Copyright © Ordnance Survey Ireland Government of Ireland Ordnance Survey Ireland Licence No. EN 00-Map center: 198628, 232556

Simple Viewer: PLA Status

Wednesday November 9, 2011



Department of Communications, Energy and Natural Resources
An Roinn Cumarsáide, Fuinnimh agus Acmhainní Nádurtha

Exploration and Mining Division Simple Viewer

Find Location Layers Themes Legend

Note the digital PL Area boundaries should not be taken as legally definitive

Map Legend

Settings

PLSTATUS

-  Competition
-  Previous Competition area now closed
-  Held for Certain Minerals
-  Licence Area Offered and Accepted
-  Open
-  Open - Exploration Incentives
-  Unavailable



Scale: 1: 362,077  Map Tool:  Pan

Simple Viewer: Returning Information on PL Areas

Wednesday November 9, 2011

Department of Communications, Energy and Natural Resources
An Roinn Cumarsáide, Fuinnimh agus Acmhainní Nádurtha

Exploration and Mining Division Simple Viewer

Find Location Layers Themes Legend

Note the digital PL Area boundaries should not be taken as legally definitive

Help

Identify Results

Coordinate Position
Irish National Grid: 281465, 273436

PL Area Boundaries
[View published documents for this PL area](#)

PL Area Number: 1440R
Geological Setting: Lower and Middle Carboniferous, Lower Palaeozoic
Ground Status: No Exploration Incentives
Licence Status: Held for certain minerals
Related Historical PLs: 672

Scale: 1: 249,209

Map Tool: **Identify PL Area Boundaries**

Copyright © Ordnance Survey Ireland Government of Ireland Ordnance Survey Ireland Licence No. EN Map center: 288850, 267601

Simple Viewer: Access to Company Reports

Wednesday November 9, 2011

Department of Communications, Energy and Climate
An Roinn Cumarsáide, Fuinnimh agus Clíam


Find Location Layers Themes Legend

Identify Results

Coordinate Position
Irish National Grid: 281465, 273436

PL Area Boundaries
[View published documents for this PL area](#)

PL Area Number: 1440R
Geological Setting: Lower and Middle Carboniferous, Lower Palaeozoic
Ground Status: No Exploration Incentives
Licence Status: Held for certain minerals
Related Historical PLs: 672



Copyright © Ordnance Survey Ireland Government of Ireland Ordnance Survey Ireland Licence No. EN Map center: 288850, 267601

Scale: 1: 249,209




Map Tool: **Identify PL Area Boundaries**

Exploration Company Reports - Windows Internet Explorer pr...

http://spatial.dcenr.gov.ie/inf/sites/EMD_Simple/explorationCompanyReports.jsp?plArea

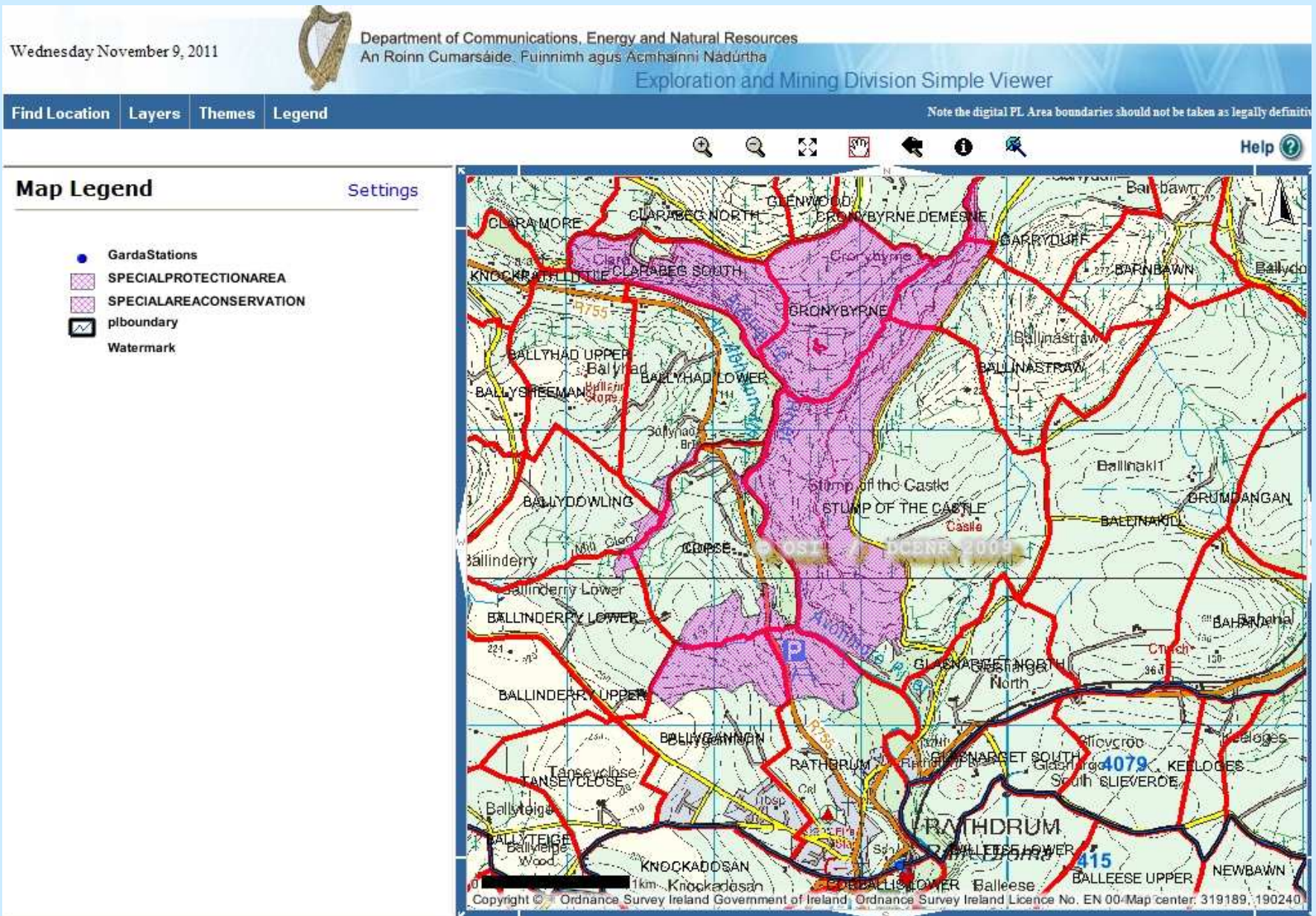
File Edit View Favorites Tools Help

PL Area Selected: 1440R

PL Area	Document Link to Exploration and Mining Division	Document Link to Geological Survey of Ireland
1440R (Selected)	 EXPLORATION & MINING DIVISION	
672 (Historic)	No Data Found	

Internet 100%

Simple Viewer: Zoom in on PLA



Future EMD Web Mapping Developments

- EMD currently upgrading map viewers
- New viewer already developed for internal use;
 - Hoped that public-facing version of viewer will be available in the New Year.
- Here's a sneak preview....



More...

Streets

Aerial

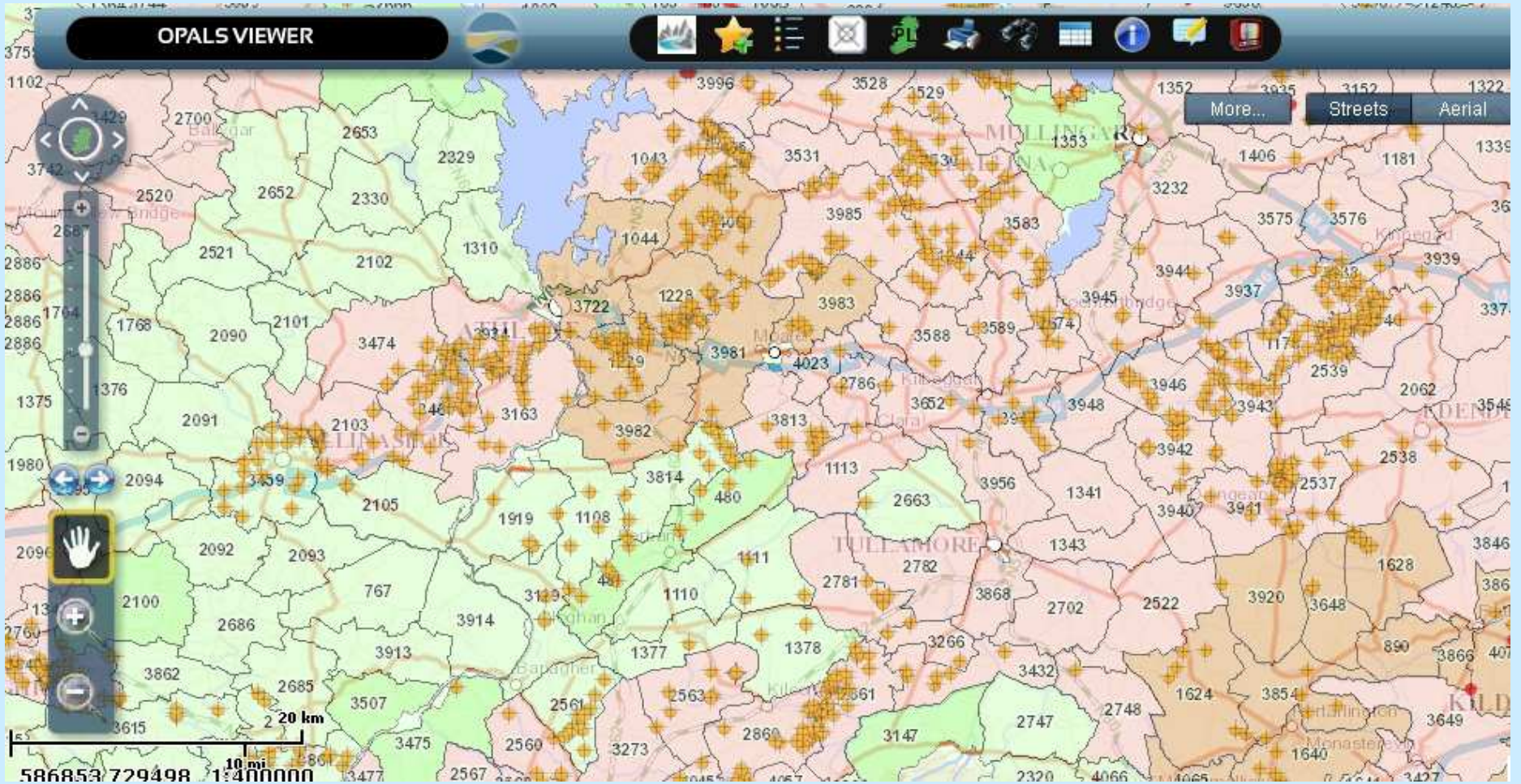


100 km

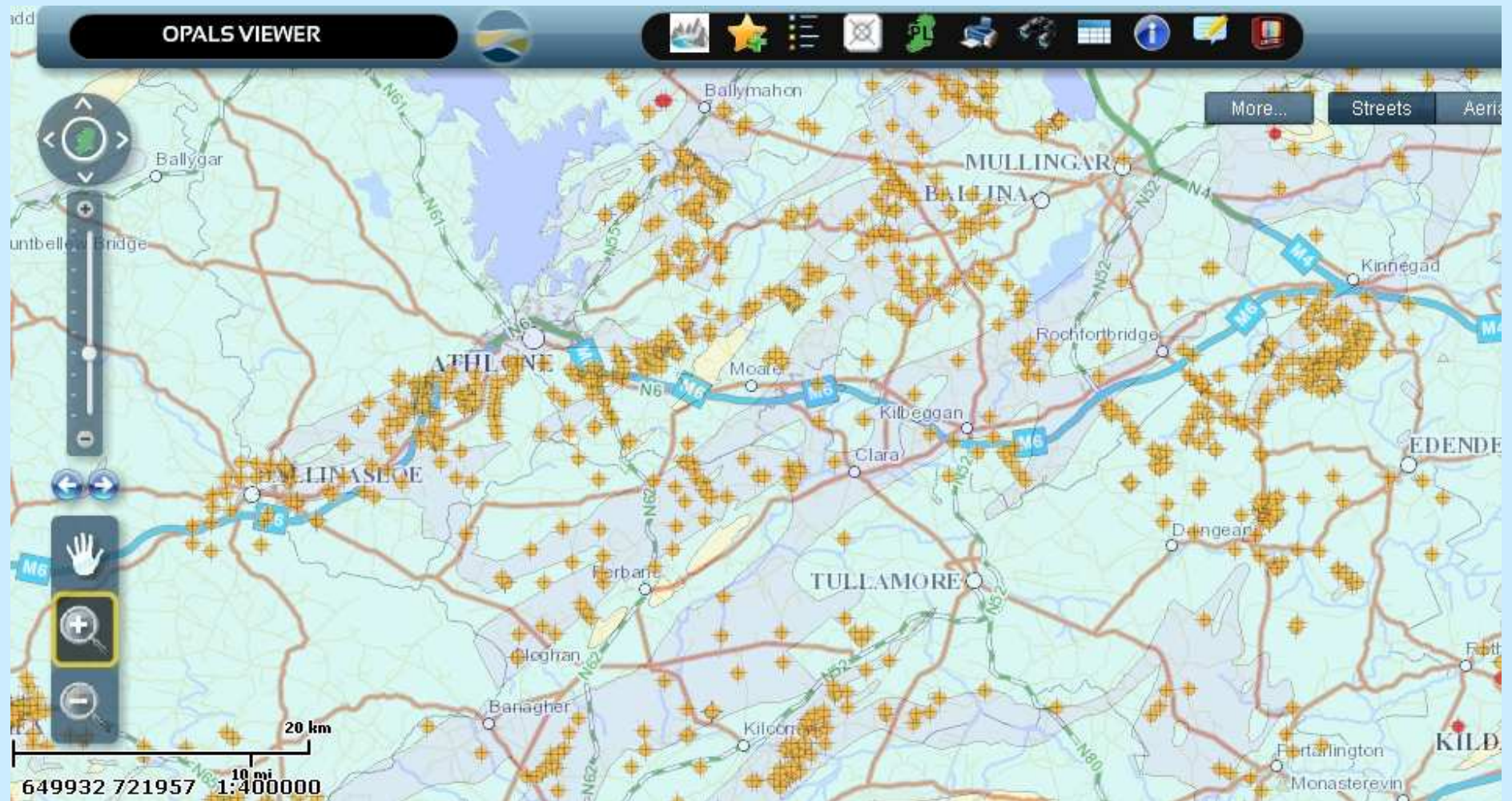
50 mi

455724 524516 1:2500000

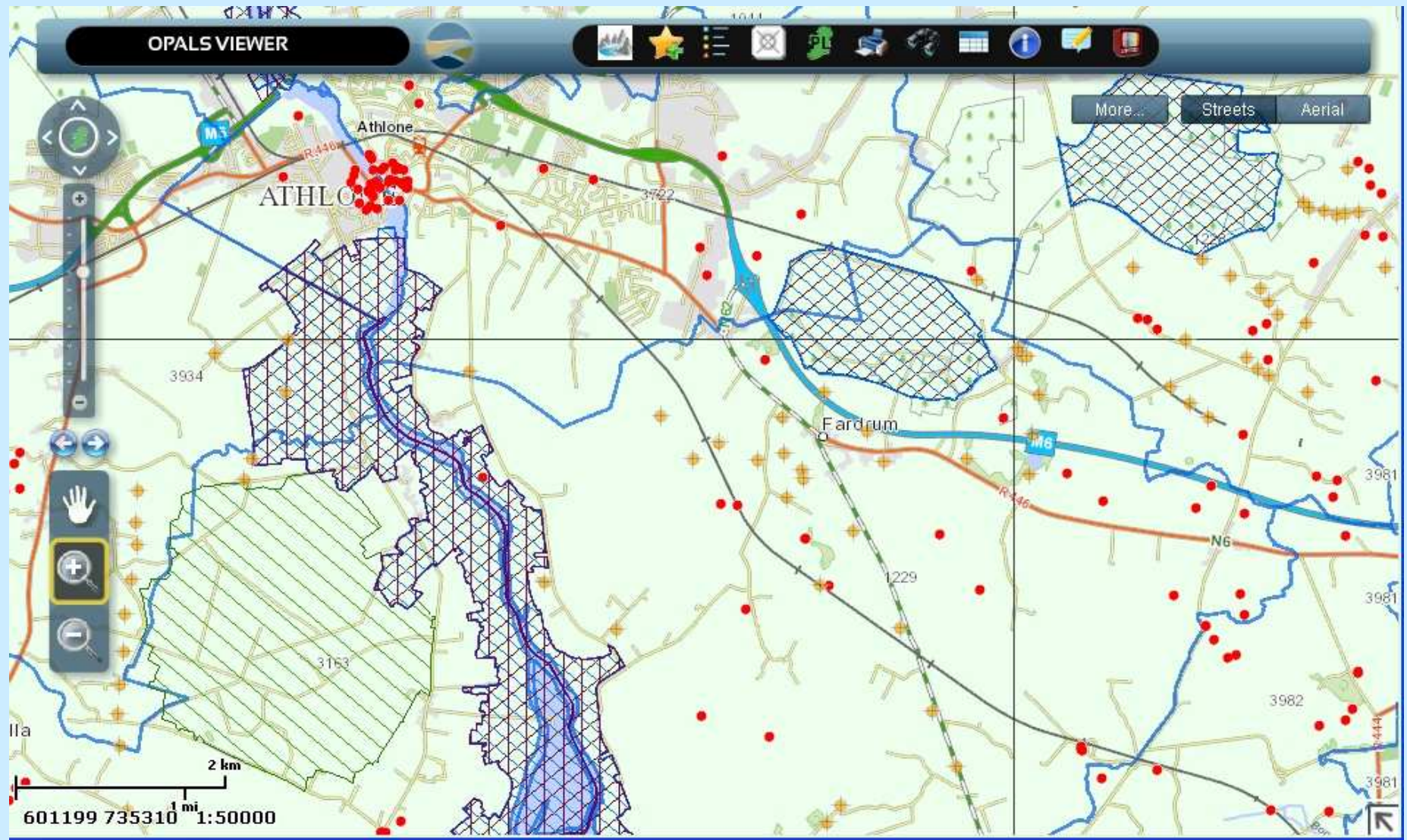
New Viewer: PL Areas and drillhole information, OSi map backdrop



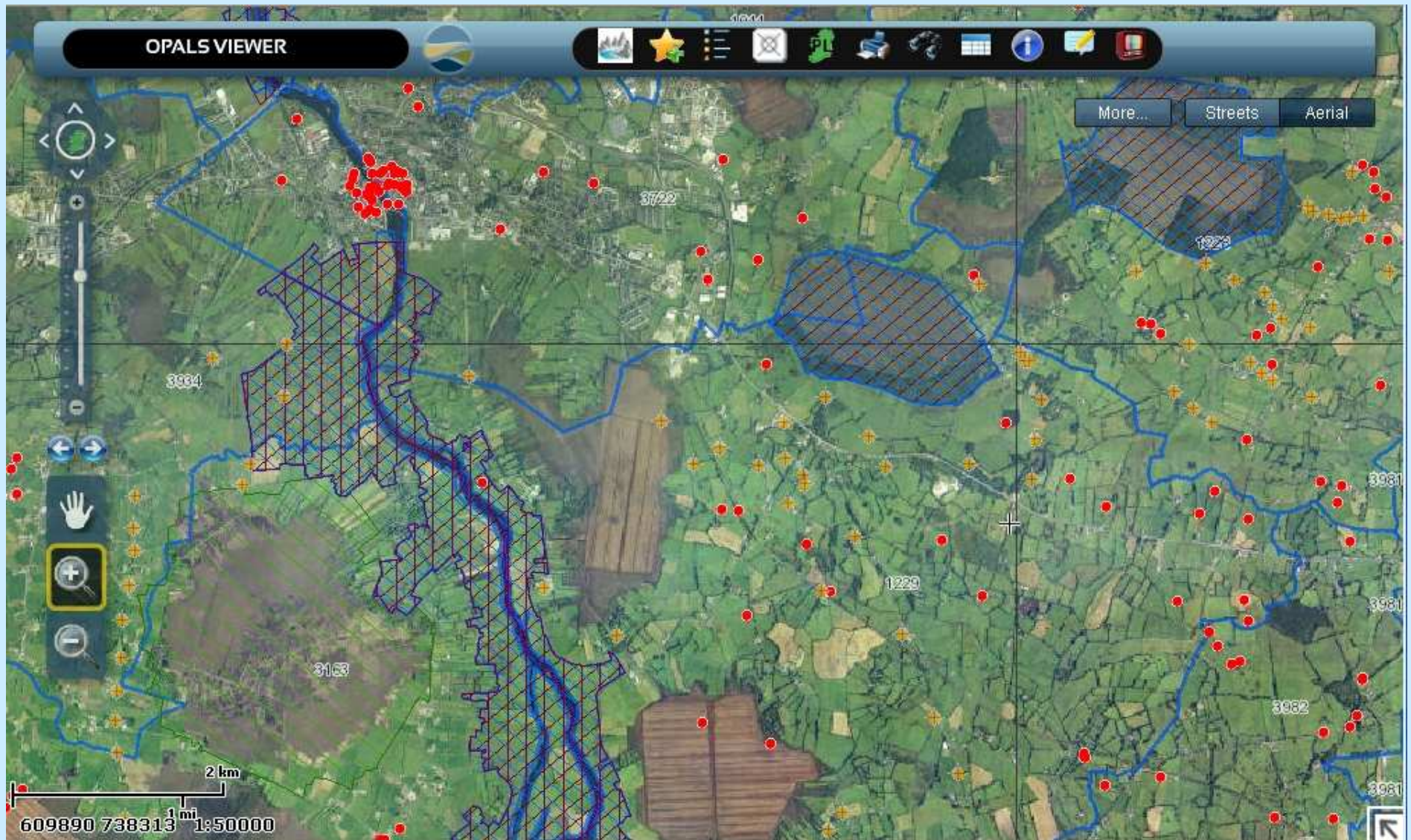
New Viewer: Drillholes on geological backdrop



New Viewer: Environmental Constraint Data on OSi base maps



New Viewer: Environmental Constraint Data on aerial photos

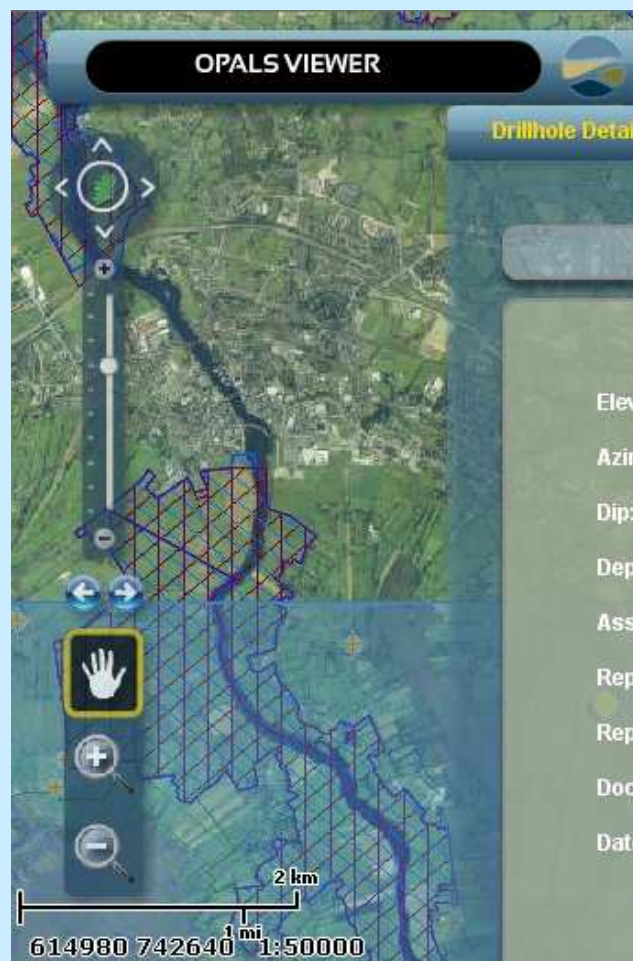


New Viewer: Attribute Information on Drillholes

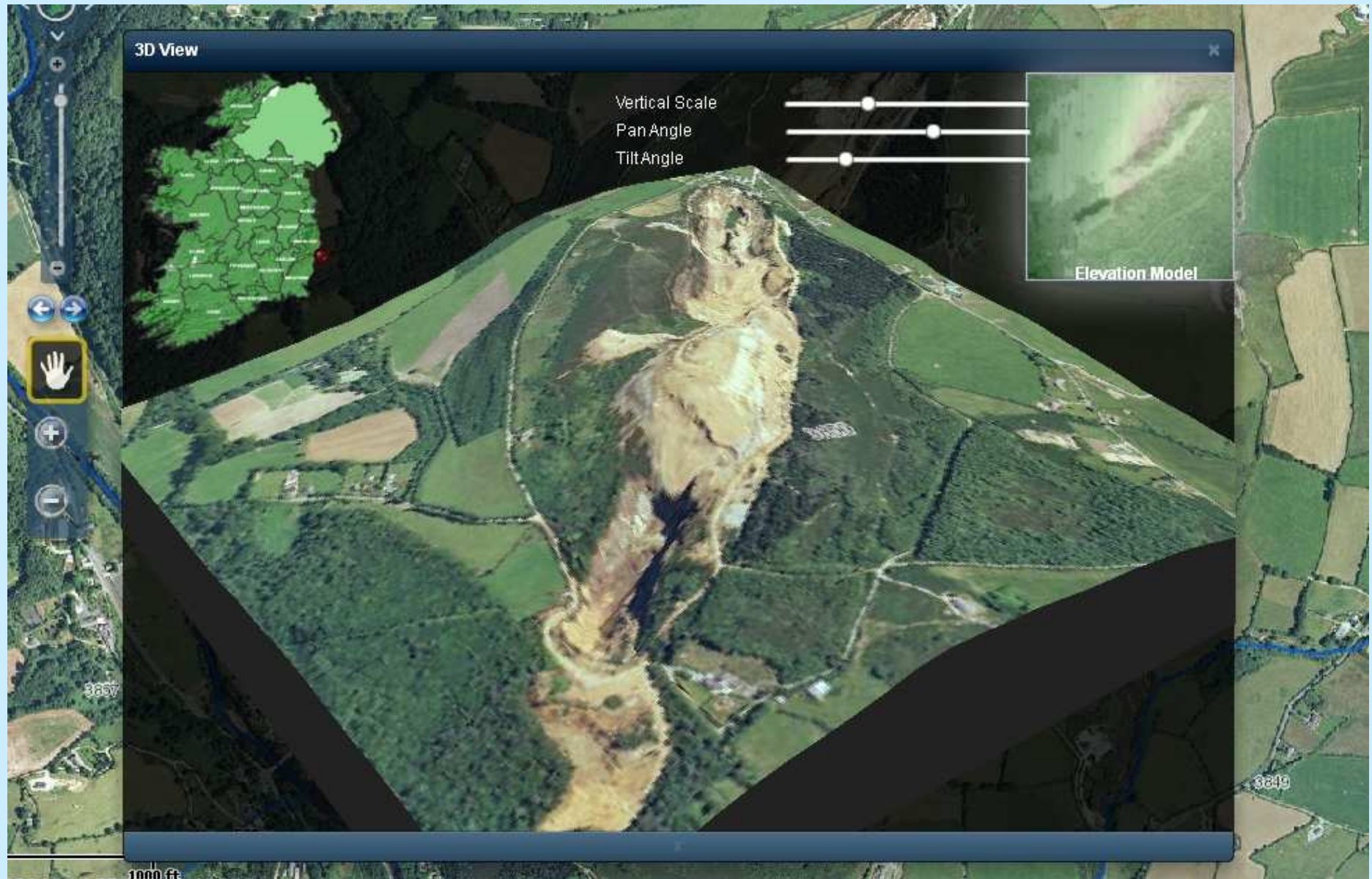
The screenshot displays the OPALS VIEWER interface. On the left is a map view with a scale bar indicating 2 km and 1:50000. The main panel on the right shows the 'Drillhole Details' for ID 92-1229-23. The details are as follows:

Details for Drillhole: 92-1229-23	
Drillhole Details Location PL Area Details Attachments	
DrillHole ID:	255803815
DrillHole Name:	92-1229-23
DrillHole Type:	DDH
Reporting Agency:	Westland Exploration Ltd.
Author:	
Drilling Company:	
File Reference:	PR58_02
Year:	1992
Create Date:	01-APR-92
Comment:	DRILLHOLE 8 ORIGINATOR: Mullpoint DRILLHOLEID: 255803815 PLANNING DRILLHOLENAME: 92-1229-23 OBJECTID: 46075

New Viewer: Access to drillhole logs

[illegible]

New Viewer: 3D Rendering Tools





Department of Communications, Energy and Natural Resources
Roinn Cumarsáide, Fuinnimh agus Acmhainní Nádurtha

Want more information?

Contact:

brian.loughlin@dcenr.gov.ie (or wayne.cox@dcenr.gov.ie)

Or visit:

www.mineralsireland.ie

www.dcenr.gov.ie/Spatial+Data/